



NÜDO
VENUES & EVENT PRODUCTION

CORPORATE PORTFOLIO

experience
creators.

(03) 9384 5272 | SALES@NUDO.CO | NUDO.COM.AU | @NUDOEVENTS



CONTENTS

ABOUT NUDO | 02

CLIENT JOURNEY | 03

THE VENUES | 04

THE WOOL MILL | 05, 06

CHAPEL 1885 | 07, 08

GATHER AND TAILOR | 09, 10

THE BUTTON FACTORY | 11, 12

THE TRUST | 13, 14

TWO TON MAX | 15, 16

THE IVORY | 17, 18

CREATIVE SERVICES | 19

REFRESH | 20

THE GOODSMITHS | 21

ANATOMY OF FLOWERS | 22

ART OF GRACE | 23

CONTACT | 24





NÜDO

If you're new to Nudo, let us tell you a little bit about our group. We are a dedicated team of venue managers, event planners, creative designers and stylists, world travelled florists, makers of epic food and drinks, and takers of award winning images and film.

We manage seven incredible venues across Melbourne, ranging from warehouses to heritage listed buildings, including a Georgian style homestead, and our flagship venue in the heart of the city:

The Wool Mill
Chapel 1885

Gather & Tailor
The Button Factory

The Trust
Two Ton Max

The Ivory

Collaborating with our venues are the teams within our creative services creating brands who work side-by-side in their field of expertise to curate seamless events:

Refresh
The Goodsmiths

Anatomy of Flowers
Art of Grace

Together we make magic. We take care of all the bits and pieces, making sure your event goes to plan, brings your ultimate vision to life, and creates an unforgettable experience for you, and your guests.

We just know we've got the ideal spot for your next celebration and an experienced team to bring it all together. So read on and discover why we are the perfect match for your next event.

All the love,

Nudo

THE CLIENT journey.

Once you've locked in your favourite Nudo venue, the team will talk you through approximate spends across catering, styling, floristry, design and photography.

After paying your deposit, you'll meet with your Planner from The Goodsmiths. You'll discover how our creative services (Refresh, The Goodsmiths, Anatomy of Flowers and Art of Grace) can help bring your vision to life.

Your Planner will work with you every step of the way to ensure your event is stress-free, engages with your target market, and brings your brand to the forefront.



one

Book a time to visit all of your favourite Nudo venues.

Select your venue and lock it in with the team, along with your perfect catering package.

two

The team will help you estimate your approximate spends across styling, floristry, design and photography teams.

Then, pay your deposit to lock in the services for your event.

three

Meet your Planner from The Goodsmiths. Discuss the finer details of your event and lock in your meeting schedule.

Your payment plan is organised by your Planner and ready to begin.

four

You are introduced to Refresh, The Goodsmiths' styling and design team, Anatomy of Flowers, and Art of Grace.

Make magic together.

five

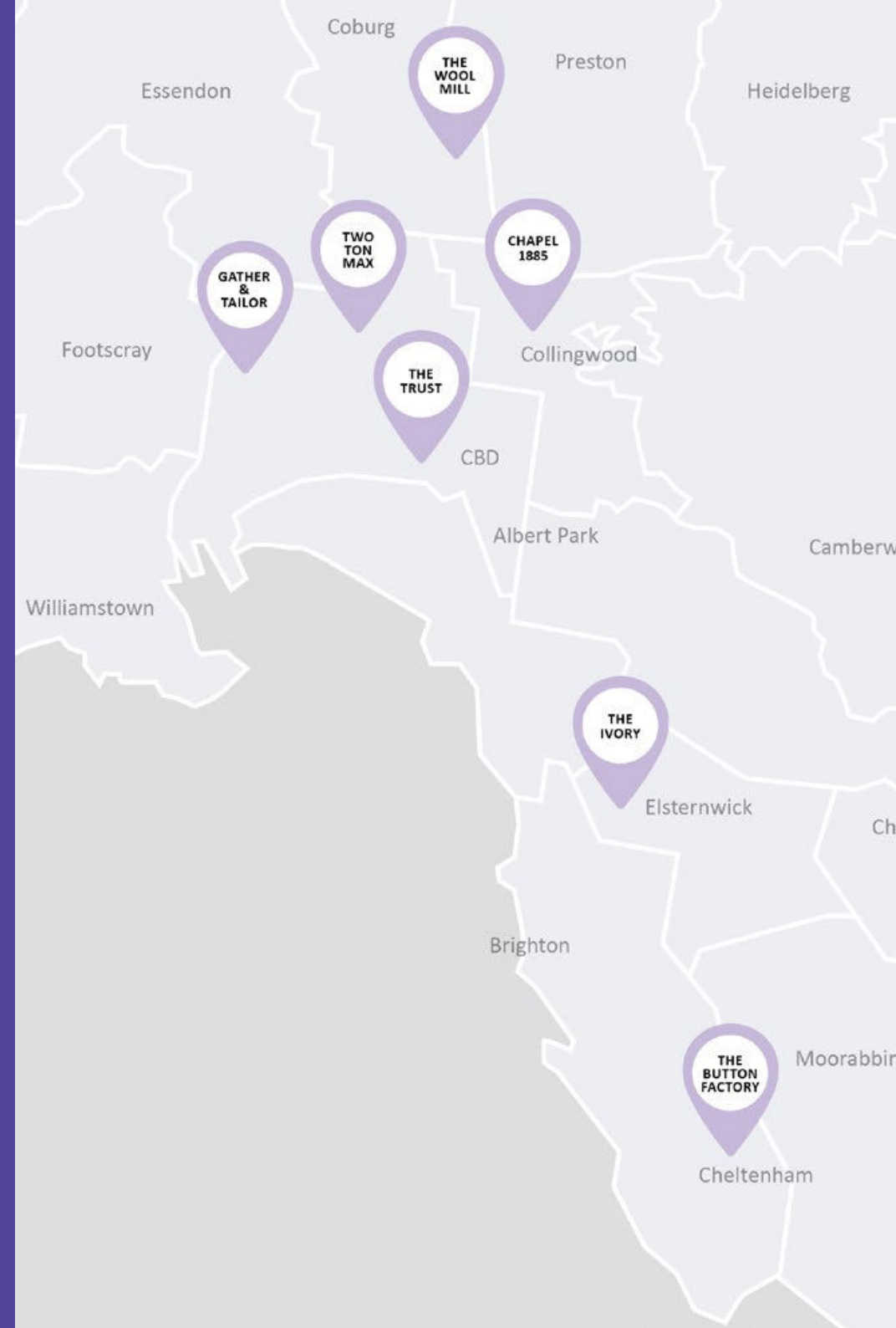
Enjoy every step of the planning journey while your Planner takes care of every little detail that you need to create your bespoke event.

THE venues.

Our portfolio of seven iconic venues are located throughout Melbourne.

Whether you're looking for industrial meets modern, Parisian or New York inspired, or a hidden suburban gem, we're sure you'll love our spaces as much as we do.

- 📍 **THE WOOL MILL:** BRUNSWICK EAST
- 📍 **TWO TON MAX:** NORTH MELBOURNE
- 📍 **GATHER & TAILOR:** WEST MELBOURNE
- 📍 **CHAPEL 1885:** COLLINGWOOD
- 📍 **THE TRUST:** CBD
- 📍 **THE IVORY:** ELSTERNWICK
- 📍 **THE BUTTON FACTORY:** CHELTENHAM



THE WOOL MILL

brunswick east.

The Wool Mill is a beautifully restored 1930's warehouse venue, and an urban minimalist's dream.

Located in the heart of Brunswick East, this modern and industrial event space can host up to 400 guests for any event.

With a crisp white interior, soaring ceilings and striking black beams, The Wool Mill is an iconic space to host a memorable corporate event.

CAPACITY

Cocktail: 400

Seated: 200

PERFECT FOR

Conferences

Product launches

Team building events

Year-end functions

ICONIC FEATURES

Laneway entrance

Feasting hall

Speakeasy bar

High saw-toothed ceilings

Green room

THE WOOL MILL

161 DONALD STREET, BRUNSWICK EAST, VIC, 3057

THEWOOLMILL.COM.AU

@THE.WOOL.MILL

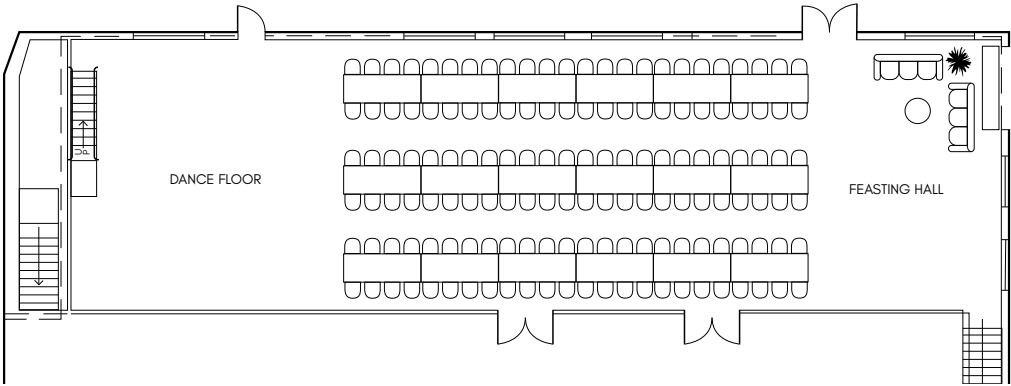
(03) 9384 5272

[BOOK A TOUR](#)

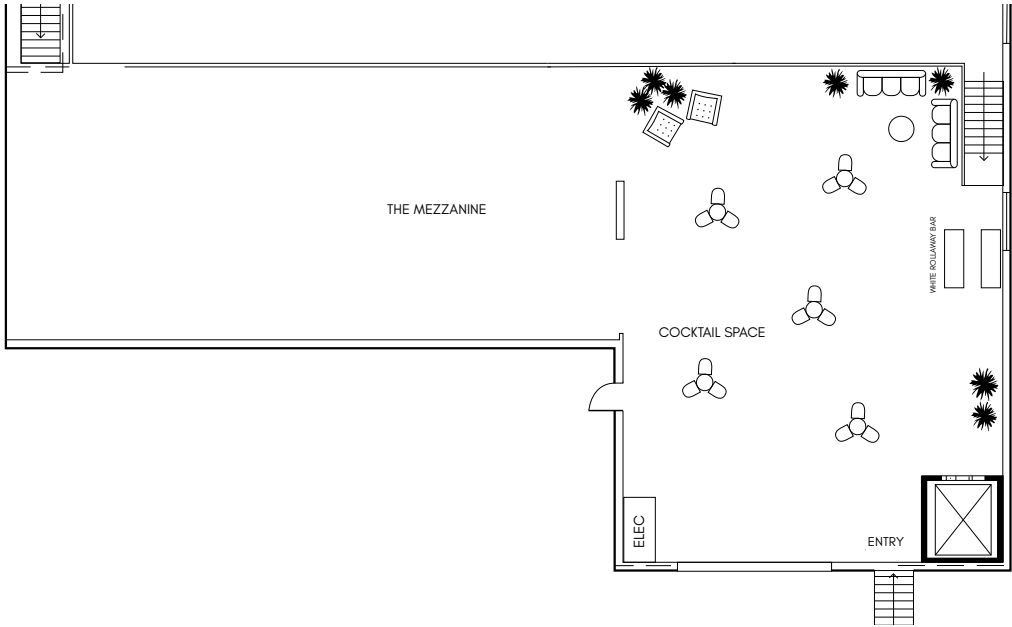
[CONTACT US](#)



THE WOOL MILL floor plans.



SEATED



COCKTAIL

CHAPEL 1885

collingwood.

Combining elegance and high-end finishes in a loft style converted chapel, Chapel 1885 is the perfect space for an intimate and unforgettable event.

With a floor to ceiling arched window, your guests will be swept up in the beauty of this chic chapel located in the heart of Collingwood.

Timber floors, fluted glass chandeliers and premium brass finishes make this venue an unforgettable place to celebrate.

CAPACITY

Cocktail: 100

Seated: 70

PERFECT FOR

Year-end functions

Corporate breakfasts

Charity lunches

Networking events

ICONIC FEATURES

Chic chapel

Intimate space

Arched window

Timber floors

Exposed brick walls

CHAPEL 1885

25 SACKVILLE STREET, COLLINGWOOD, VIC, 3066

CHAPEL1885.COM.AU

@CHAPEL1885

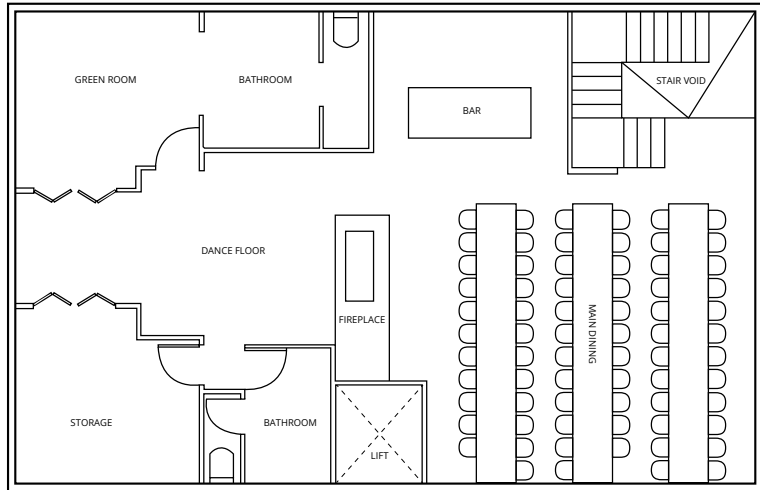
(03) 9384 5272

BOOK A TOUR

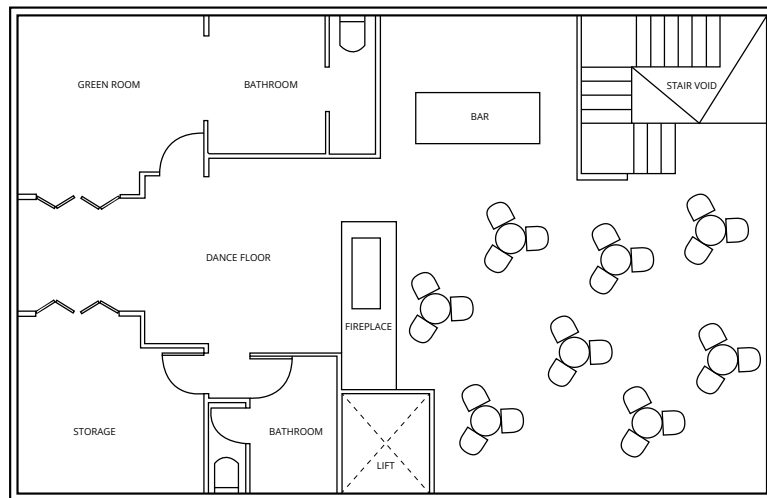
CONTACT US



CHAPEL 1885 floor plans.



Entry



Entry



SEATED



COCKTAIL

GATHER & TAILOR

west melbourne.

Located right on the banks of the Maribyrnong River in trendy West Melbourne, Gather & Tailor is a beautiful blank canvas warehouse.

Bringing the winery vibes to the city, Gather & Tailor combines rustic timber features and romantic ambience, with an inner city location just outside Melbourne CBD.

With long timber dining tables and generous room for a dance floor and feature bar, Gather & Tailor can host up to 400 guests comfortably.

CAPACITY

Cocktail: 400

Seated: 300

PERFECT FOR

Conferences

Product launches

Team building events

Year-end functions

ICONIC FEATURES

100 year old venue

Large warehouse space

Wooden beams

Timber floors

Versatile floor plan

Gather & Tailor

UNIT 11/41-59 SIMS ST, WEST MELBOURNE, 3003

GATHERANDTAILOR.COM.AU

@GATHERANDTAILOR

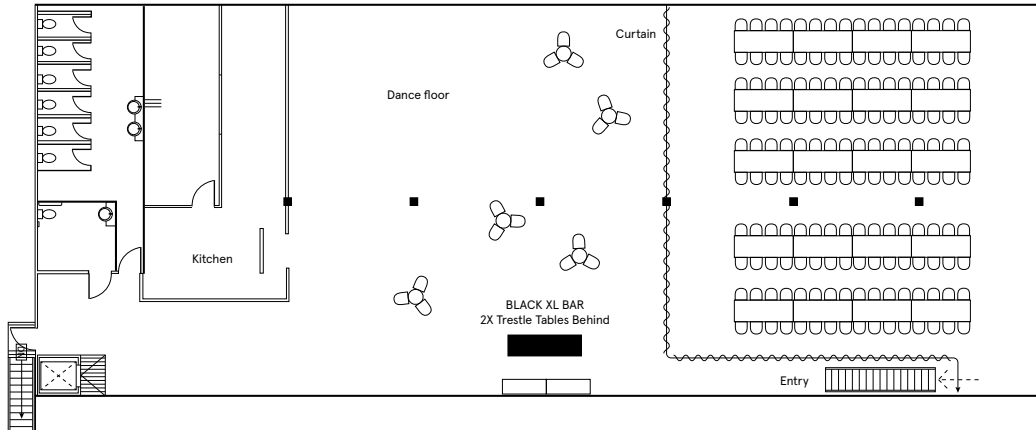
(03) 9384 5272

[BOOK A TOUR](#)

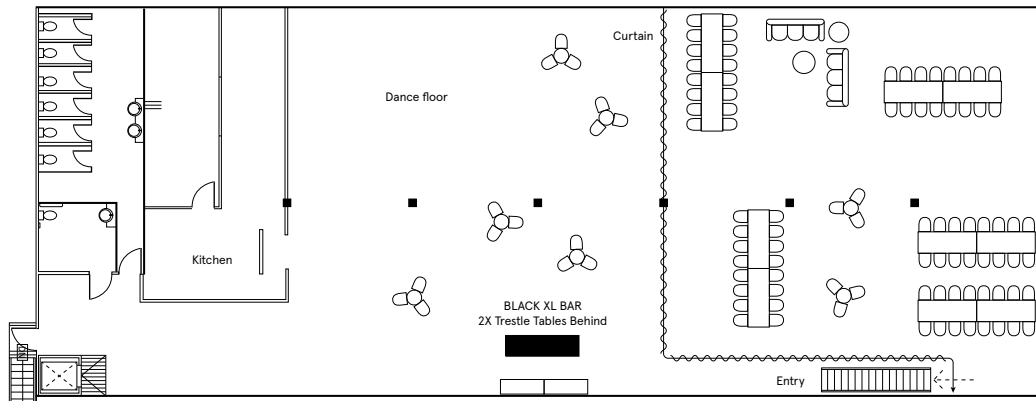
[CONTACT US](#)



GATHER & TAILOR floor plans.



SEATED



COCKTAIL

THE BUTTON FACTORY cheltenham.

Located in the bayside suburb of Cheltenham, The Button Factory is an urban gem served with a side of soul.

A restored 50s warehouse, the venue radiates charm, creativity and character. This light-filled, renovated factory space can host events for up to 300 guests.

CAPACITY

Cocktail: 300

Seated: 200

PERFECT FOR

Conferences

Product launches

Team building events

Year-end functions

Workshops

ICONIC FEATURES

Indoor garden oasis

Art gallery featuring local artists

Large light-filled loft space

Blend of industrial and new

Three distinct event spaces

THE BUTTON FACTORY

14 HAMLET STREET, CHELTENHAM, VIC, 3192

THEBUTTONFACTORY.COM.AU

@THE_BUTTONFACTORY

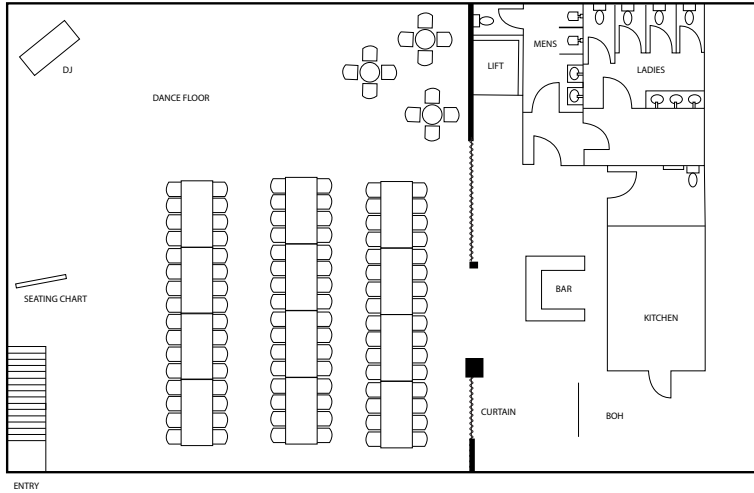
(03) 9384 5272

[BOOK A TOUR](#)

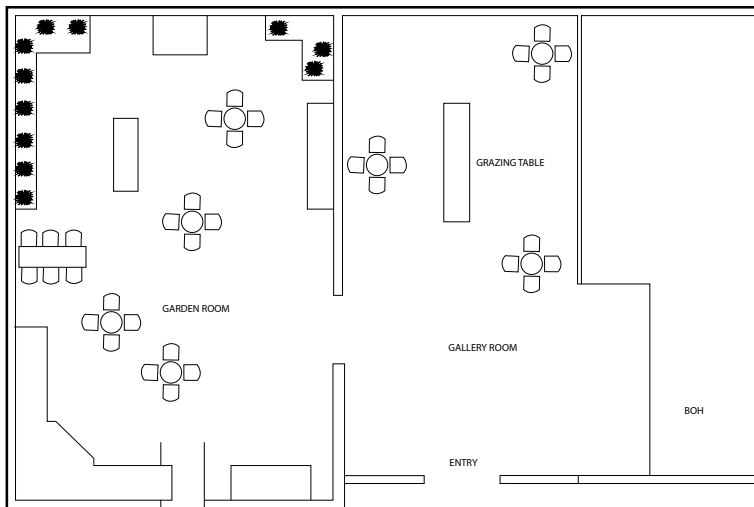
[CONTACT US](#)



THE BUTTON FACTORY floor plans.



SEATED



COCKTAIL

THE TRUST cbd melbourne.

Located on the iconic Flinders Lane, right in the heart of Melbourne's CBD, the former Port of Melbourne Authority building has been resurrected in style.

Its genesis is a story of 20th century Beaux-Arts heritage features. Here, old-world craftsmanship meets contemporary flair with a touch of the experimental.

The Trust can hold up to 200 seated guests and 450 cocktail guests.

CAPACITY

Cocktail: 450

Seated: 200

PERFECT FOR

Product launches

Year-end functions

Workshops and courses

Charity lunches

Corporate dinners

ICONIC FEATURES

Iconic Melbourne building

Heritage listed

Large, grand, light-filled space

Historic architectural features

THE TRUST

405 FLINDERS LANE, MELBOURNE, VIC, 3000

THETRUSTMELBOURNE.COM.AU

@THETRUST_MELBOURNE

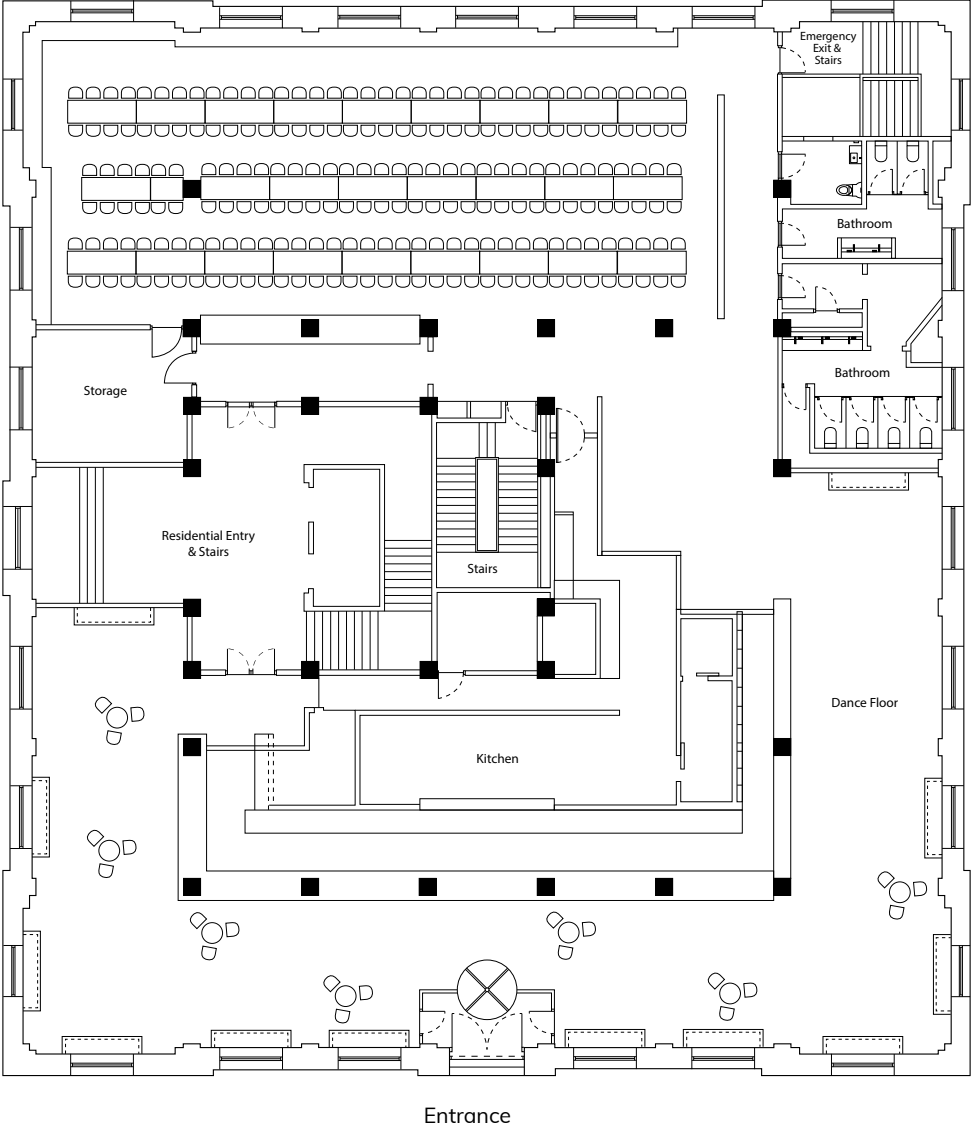
(03) 9384 5272

[BOOK A TOUR](#)

[CONTACT US](#)



THE TRUST floor plans.



SEATED



COCKTAIL

TWO TON MAX

north melbourne.

Tucked within the laneways of North Melbourne, Two Ton Max is a modern, industrial events venue that gives all the feels of quintessential Melbourne.

Combining urban and contemporary finishes with elegance and flexibility, this is a blank canvas space where you can bring your brand to life.

Two Ton Max can hold up to 240 people seated and 350 people standing.

CAPACITY

Cocktail: 350

Seated: 240

PERFECT FOR

Product launches

Year-end functions

Workshops and courses

Charity lunches

Corporate dinners

ICONIC FEATURES

Large light-filled space

External garden wall

Private outdoor garden

High ceilings featuring skylights

Marble bar

TWO TON MAX

124 LANGFORD STREET, NORTH MELBOURNE, VIC, 3051

TWOTONMAX.COM.AU

@TWO_TON_MAX

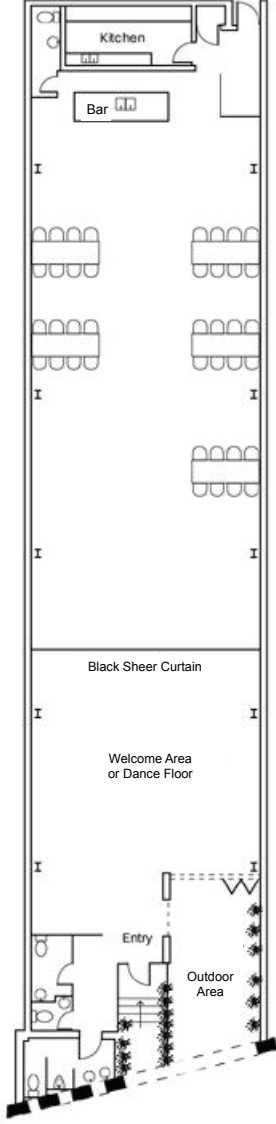
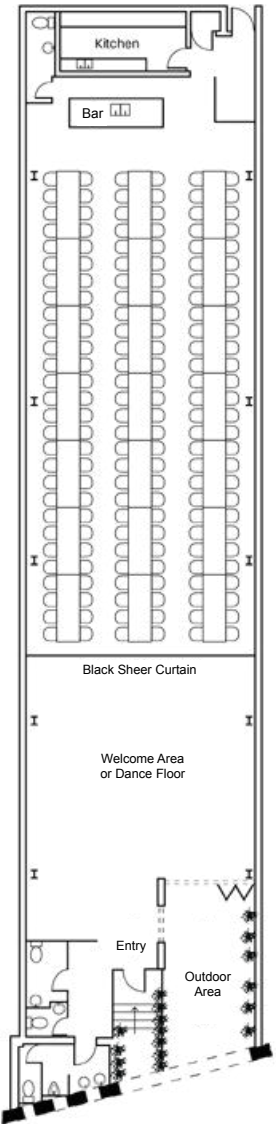
(03) 9384 5272

[BOOK A TOUR](#)

[CONTACT US](#)



THE TON MAX floor plans.



SEATED



COCKTAIL

THE IVORY elsternwick.

Combining grand architecture with contemporary design, The Ivory exudes elegance.

Classic Georgian style features are complemented by a breathtaking ballroom, fluted-timber bar and a lush terrace garden bursting with fragrant roses and greenery.

This bayside venue provides everything you want and more for your event.

CAPACITY

Cocktail: 400

Seated: 350

PERFECT FOR

Conferences

Corporate breakfasts

Charity lunches

Corporate dinners

Schools formals and graduations

ICONIC FEATURES

Two event spaces

Rose garden terrace

Private dressing room

Dedicated dance floor

Breathtaking bud-lit ceiling

5km from Melbourne CBD

The Ivory

37 CLARENCE STREET, ELSTERNWICK, VIC, 3185

THEIVORYELSTERNWICK.COM.AU

@THEIVORYELSTERNWICK

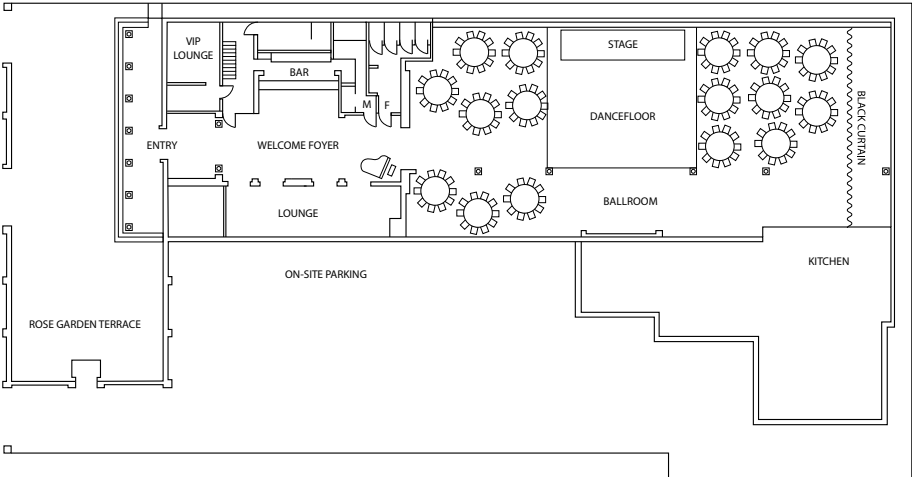
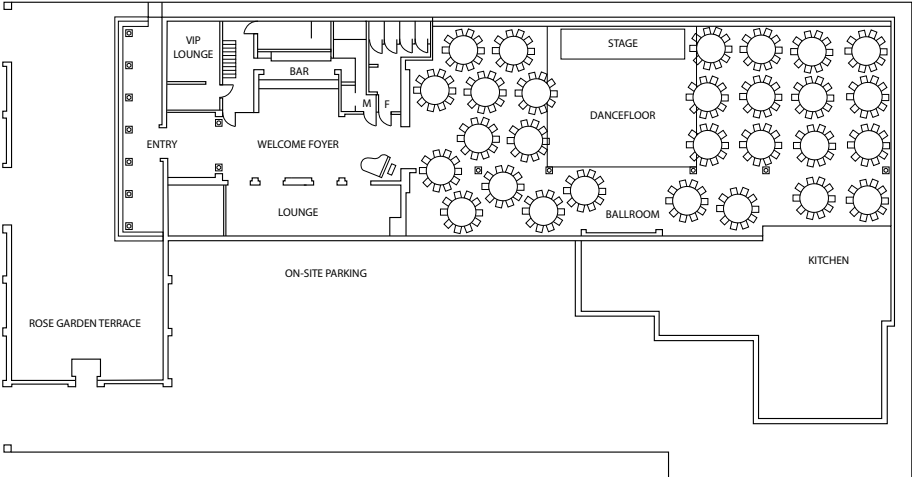
(03) 9384 5272

BOOK A TOUR

CONTACT US



THE IVORY floor plans.



SEATED

CREATIVE services.

Part of the Nudo magic is the ability to utilise our in-house creative services to create seamless, stress-free events.

When you book a Nudo venue, you have the option to access our planning, floristry, styling, design, photography, and catering services brands.

These creative powerhouses prioritise your ideas and use them to build your narrative and tell your story, uniquely tailoring each and every detail.





REFRESH

Refresh specialise in curating culinary experiences for weddings and events.

You can choose from a range of food and beverage dining options to suit your needs, covering everything from cocktail to sit down, including shared dining or alternate plated.

Your Planner will talk you through your options.

OFFERING

Tailored menus

Event dining experiences

Premium beverages

REFRESH

REFRESHEVENTS.COM.AU

[@REFRESHCATERING](https://www.instagram.com/REFRESHCATERING)

(03) 9384 5272

[CONTACT US](#)



THE GOODSMITHS

The Goodsmiths is a team of wedding and event planners, stylists and designers. Together, they design and curate unforgettably good event experiences.

The Goodsmiths approach everything with fresh eyes and ears, and they believe creativity is their ultimate weapon, and collaboration is key.

The expert team of planners and designers will assist you in creating unique, custom designs for your next event, that will put your brand front and centre.

OFFERING

- Planning
- Styling
- Invitations and menus
- Signage

THE GOODSMITHS

THEGOODSMITHS.COM.AU
@THE.GOODSMITHS
(03) 9384 5272

CONTACT US



ANATOMY OF FLOWERS

Anatomy of Flowers is a team of florists inspired by design, music, and Mother Nature. They craft arrangements and installations that evoke emotions, cue memories and play with your senses.

These botanical engineers plan and construct with precision to deliver epic installations for your next event, that showcase your brand's identity.

OFFERING

Floral installations
Tablescapes
Styling

ANATOMY
of FLOWERS

[ANATOMYOFFLOWERS.COM.AU](https://www.anatomyofflowers.com.au)

[@ANATOMYOFFLOWERS](https://www.instagram.com/anatomyofflowers)

(03) 9384 5272

CONTACT US



ART OF GRACE

Art of Grace is a Melbourne-based photo and video collective of visual storytellers.

They have spent years perfecting the art of bringing out the good feels, because good feels make good images.

They're experts at making you feel at ease in front of the lens, whilst they concentrate on capturing those fleeting moments that go unnoticed by most, so you have your life moments documented forever.

OFFERING

- Photography
- Videography
- Albums

ART OF GRACE

ARTOFGRACESTUDIOS.COM.AU
@ARTOFGRACESTUDIOS
(03) 9384 5272

CONTACT US

SAY
hello.

CONTACT US TODAY TO GET PLANNING

SALES@NUDO.CO
(03) 9384 5272
@NUDOEVENTS
NUDO.COM.AU

IN ANY EVENT,
it's magic.

